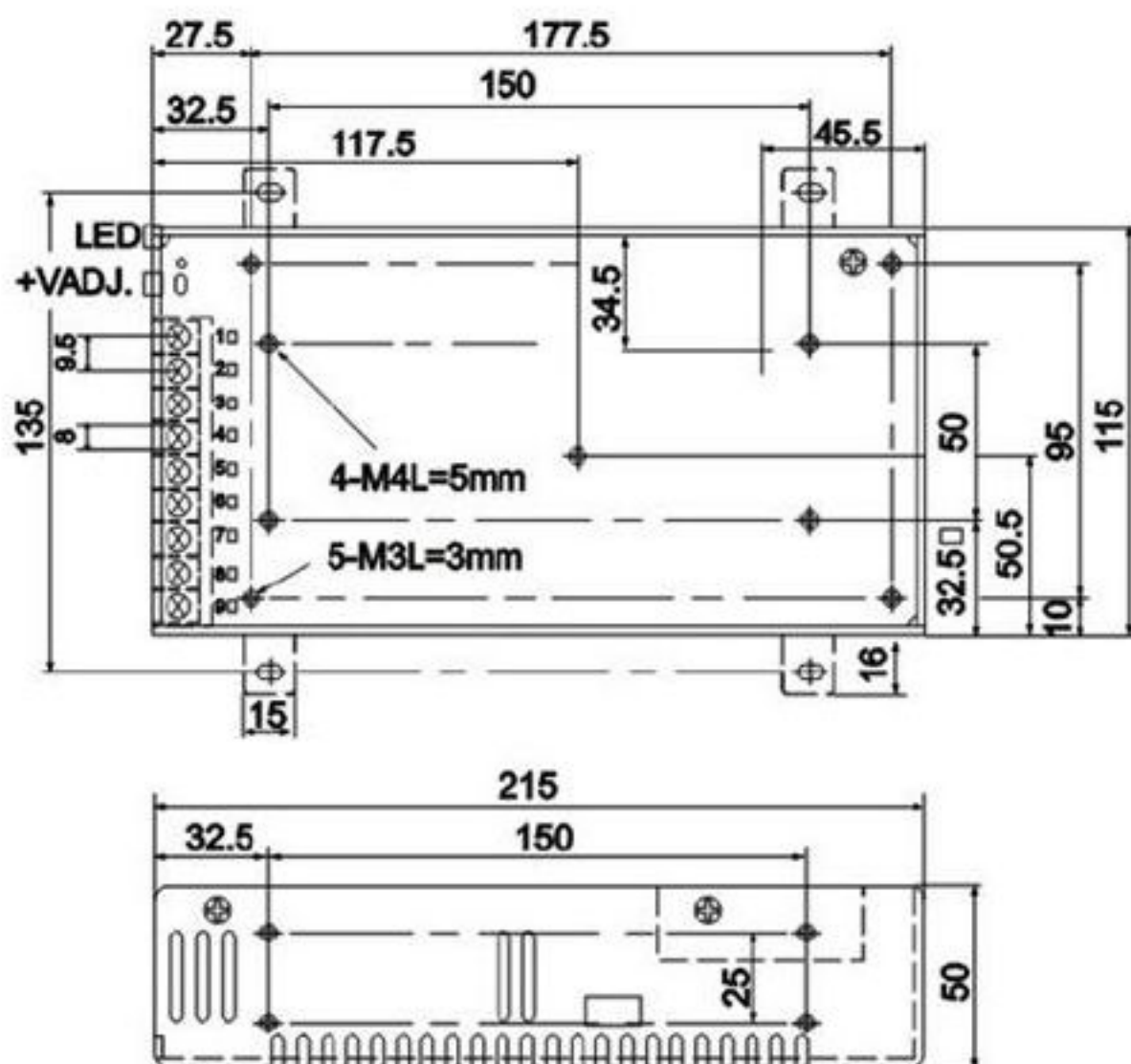




- Features:
- High efficiency, high reliability
 - Switch input voltage range choice
 - 100% full load and machine test
 - Protection characteristics: short circuit/overload/pressure/thermal
 - Air cooling
 - Working frequency 25 KHz
 - 1 year warranty
 - Size: 215*115*50mm (L*W*H)

model		S-201-12	S-201-13.5	S-201-15	S-201-24	S-201-27	S-201-48
output	Dc output voltage	12V	13.5V	15V	24V	27V	48V
	Output voltage tolerance	±1%	±1%	±1%	±1%	±1%	±1%
	Rated output current	16.5A	14.7A	13A	8.3A	7.4A	4.2A
	Output current range	0-16.5A	0-14.7A	0-13A	0-8.3A	0-7.4A	0-4.2A
	Output power	198W	198.45W	198W	199.2W	199.8W	201.6W
	Ripple and the noise	150mVp-p	150mVp-p	150mVp-p	150mVp-p	200mVp-p	240mVp-p
	Dc voltage adjustable scope	-16% , +10%	-12% , +11%	-10% , +20%	-16% , +10%	-4% , +18%	-15% , +17%
	Start, rise, keep time	200ms,100ms,20ms Loaded with					
input	Input voltage range	90~132 VAC/180~264VAC 47~63 Hz ; 由开关选择254~370VDC					
	Exchange input current	4.5A/115VAC 2.5A/230VAC					
	efficiency	76%	79%	78%	82%	82%	83%
	Impulse current	50A/115V 50A/230V					
	Leakage current	< 3.5 mA/240VAC					
Protection characteristics	Overload protection	115%~135% Protection way: current limiting, automatic recovery					
	Overvoltage protection	115%~135% Protection way: voltage limitation, automatic recovery					
	High temperature protection	RTH3 acuity 90 °C, the temperature drop, cut off output automatically after recovery					
environment	Working temperature, humidity	-10°C~+50°C ; 20%~90 %RH					
	Keep temperature, humidity	-20°C~+85°C ; 10%~95 %RH					
	Vibrate resistance	10~500Hz , 2G 10min./ 1 cycle time, 60 minutes, the axis					
security	Compression sex	Input/output: 1.5 KVAC input and between to KVAC output and the earth: 1.5:0.5 KVAC					
	Insulation resistance	Between the input and output, the input and output, and ground: 100M Ohms/500VDC					
standard	Safety standards	符合UL1950					
	EMC standard	Drsign refer to FCC Part15 J Conduction Class A					
other	weight	0.93Kg					
	packaging	12pcs/11.6Kg/0.93CUFT					
note	<ol style="list-style-type: none"> All the parameters in has not specified, all is in 230 VAC voltage input, rated load and 25 °C conditions measuring income value. Ripple and noise voltage is in 20 MHz bandwidth oscilloscope take 12 inches twisted pair end with 0.1 mu and 47 u when capacitance measurement. Tolerance is voltage setting error, the voltage adjustment rate and adjust the sum total of the current rate. Specific output current see output drop forehead curve. 						

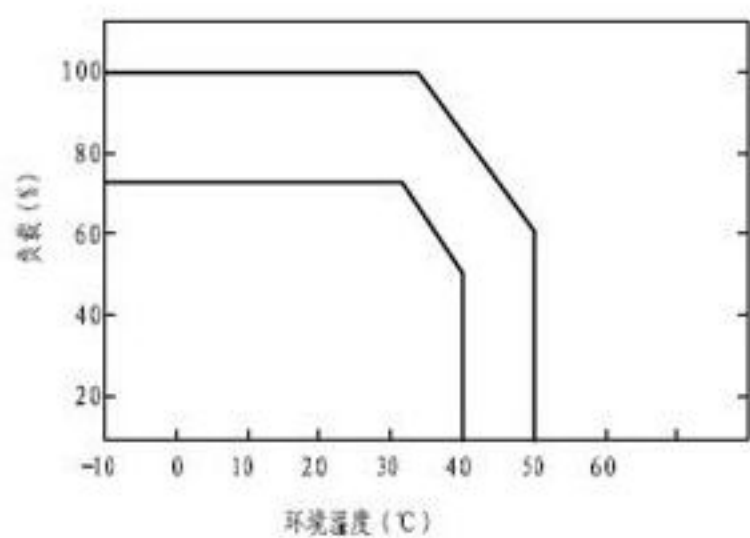
外形及安装尺寸见下图:



端子定义:

脚位号	功能	脚位号	功能
9	AC/L	6、5、4	DC OUTPUT -V
8	AC/N	3、2、1	DC OUTPUT +V
7	FG ⊕		

■ 输出降额特性



■ 输出对输入电压的降载曲线

